

# Reference 27000M

Complicated desk clock

Caliber 86-135 PEND S IRM Q SE



*Complicated desk clock. Rare handcrafts*

Patek Philippe combines tradition and innovation in a perpetual calendar and weekly calendar desk clock featuring a new manually wound caliber with a 31-day power reserve, +/- 1 second per day rate accuracy and user-friendliness worthy of a 21<sup>st</sup>-century timepiece. Resulting from a seven-year development process, the new rectangular 86-135 PEND S IRM Q SE caliber

(912 components) has led to nine patent applications. To guarantee optimum performance, engineers have designed a genuine “precision regulator” at the heart of the movement. This new Sterling Silver timepiece is also distinguished by its refined, timeless exterior enhanced by green *flinqué Grand Feu* enamel.

## Indicators, functions and corrections



- ❶ Hour hand
- ❷ Minute hand
- ❸ Seconds hand (jumping seconds)
- ❹ Week number
- ❺ Day
- ❻ Date
- ❼ Month
- ❽ Moon phases
- ❾ Leap-year cycle
- ❿ Day/night indication
- ⓫ Power reserve indication

- W Week number correction
- D Day-of-week correction
- ☾ Moon-phase correction
- M Month and year correction
- C Date correction (Calendar)
- ❶ Push-button for opening the hinged cover
- ❷ Winding and time setting key
- ❸ Time setting
- ❹ Winding (clockwise)
- ❺ On/off settings
  - Counterclockwise: time setting activated, seconds and movement stopped
  - Clockwise: time setting deactivated, seconds and movement running

## PERPETUAL CALENDAR

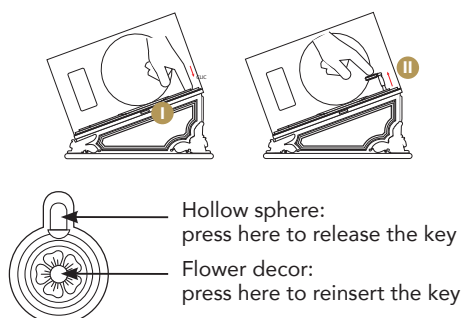
The perpetual calendar indicates the day, date and month by automatically taking into account months with 28, 29, 30 or 31 days, meaning for example that it goes directly from September 30<sup>th</sup> to October 1<sup>st</sup> or from February 28<sup>th</sup> in non-leap years to March 1<sup>st</sup>. In leap years, it also indicates February 29<sup>th</sup> and then switches directly to March 1<sup>st</sup>. The date, day and month are complemented by a leap-year cycle display and a moon-phase display so accurate that it takes 122 years to accumulate a one-day discrepancy from the true lunar cycle. If the clock is wound regularly, the perpetual calendar will run without any need for readjustments until February 28<sup>th</sup> of the year 2100, the secular year in which the Gregorian calendar exceptionally deletes February 29<sup>th</sup>.

## ADJUSTMENTS AND CORRECTIONS

The adjustments of your desk clock are made by means of a control panel located under the hinged cover. To open this cover, press the push-button ❶ on the right side of the clock and, while holding the button, gently lift the cover until it is fully open.

*Except when setting or winding the clock, we recommend keeping the cabinet cover closed.*

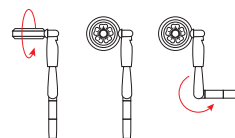
Once the cover is open, you will find a compartment in the upper left corner that houses the winding and time-setting key ❷.



To release the key from its compartment, press gently on the hollow sphere and then gently pull it out straight.

Once it is released, rotate the head a quarter turn (upright in line with the key itself) and bend the lower section at a right angle so that the key is ready for use. To reinsert the key in its compartment, press gently on the flower décor.

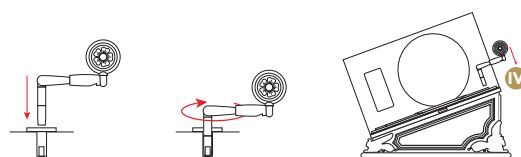
*Important: If the key gets stuck in its compartment, please contact an authorized service center.*



## MOVEMENT WINDING

Your desk clock is equipped with a manually wound movement. Once fully wound, your clock has a 31-day power reserve. To wind the movement, insert the key into the “MOVEMENT” slot ❷ located in the upper right corner and turn clockwise as indicated by the arrow. If the movement is completely wound down, about 120 turns are necessary to wind the clock to its maximum, thus achieving a 31-day power reserve. Please note that at regular intervals, when winding the desk clock, a characteristic sound (“zzz”) is briefly heard; this is a normal phenomenon, due to the quick rebalancing of the three powerful barrel springs, which recharge each other according to the communicating vessels principle. This sound may also be audible, albeit more lightly, during the normal operation of the desk clock.

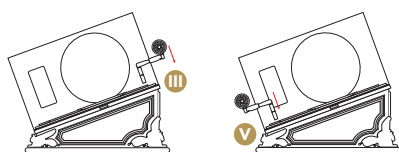
*Caution: Stop winding when the power-reserve indicator hand ❶ is on 31 and you feel increased resistance. Be sure not to force it, so as to avoid damaging the movement.*



## TIME SETTING

To set the time on your desk clock, kindly proceed as follows:

- First, insert the key into the slot **(V)** beneath the moon-phase corrector and turn it counter-clockwise to stop the movement.
- Once the movement has stopped, remove the key from its slot and insert it into the “TIME SETTING” slot **(III)** located in the upper right corner. Move the hands forward or backward by turning the key clockwise or counterclockwise.
- Check the time range by means of the day/night indicator **(10)**, which is indexed to the hours and minutes display and allows you to distinguish between day and night time (respectively white = 6 a.m. to 6 p.m.; blue = 6 p.m. to 6 a.m.)
- Once the time has been set, remove the key and insert it back into slot **(V)**. Turn the key clockwise to restart the movement.



Your clock has a “stop-seconds” system enabling you to set the time to the exact second, based on a time signal. When you turn the key counter-clockwise, the seconds hand comes to a halt instantly, indicating that the movement has stopped. It starts again immediately when you turn the key clockwise.

## PREPARING FOR CALENDAR SETTINGS

- Before any adjustments or corrections, we recommend that you completely wind your clock using the key provided for this purpose. Insert the key into the “MOVEMENT” slot **(IV)** located in the upper right corner and turn clockwise as indicated by the arrow.
- The date **(6)** must be moved forward to the first day of the month using the dedicated **(C)** (Calendar) button prior to setting the month **(7)**. A safety mechanism prevents the month from being corrected if the date is not previously set to the first.

*Caution: In order to ensure accurate adjustment of the calendar or moon phases, no corrections should be made between 7 p.m. and 1 a.m.*

## DAY CORRECTION

To correct the day **(5)**, press **(D)** (Day) button as many times as necessary until the desired day is displayed.

*Important: The day must be corrected before the week, since moving from Sunday to Monday changes the week.*

## WEEK NUMBER CORRECTION

To correct the week number ④, press the (W) (Week) button as many times as necessary until the desired number is displayed.

Depending on your country of residence, the week starts either on Sunday or Monday. The mechanism of your clock has been designed so that the week starts on Monday, according to the international standard ISO 8601.

Although most years have 52 weeks, some may have 53 weeks. This is because the number of days in a year varies between 365 and 366 days depending on the leap-year cycle. To check the number of weeks in the current year, you can refer to the calendar below:

|             |      |      |      |      |      |      |      |      |      |      |      |
|-------------|------|------|------|------|------|------|------|------|------|------|------|
| Year        | 2025 | 2026 | 2027 | 2028 | 2029 | 2030 | 2031 | 2032 | 2033 | 2034 | 2035 |
| Nb of weeks | 52   | 53   | 52   | 52   | 52   | 52   | 52   | 53   | 52   | 52   | 52   |
| Year        | 2036 | 2037 | 2038 | 2039 | 2040 | 2041 | 2042 | 2043 | 2044 | 2045 | 2046 |
| Nb of weeks | 52   | 53   | 52   | 52   | 52   | 52   | 52   | 53   | 52   | 52   | 52   |
| Year        | 2047 | 2048 | 2049 | 2050 | 2051 | 2052 | 2053 | 2054 |      |      |      |
| Nb of weeks | 52   | 53   | 52   | 52   | 52   | 52   | 52   | 53   |      |      |      |

## MOON PHASE CORRECTION

In order to ensure that the display of this large moon disk is accurate, the number of steps has been doubled and the correction is made by half days. Each time the (C) button is pressed, the moon disk ⑧ moves forward by half a day to a new phase. Start by advancing the moon disk until the moon appears in the center of the window at its full moon position. Then consult an almanac or [www.patek.com](http://www.patek.com) to determine the number of days since the last full moon (including the day of the adjustment). To set the moon to its exact phase, press the (C) button twice as many times as the number of days since the last moon (8 days = 16 presses).

## MONTH AND LEAP-YEAR CYCLE CORRECTION

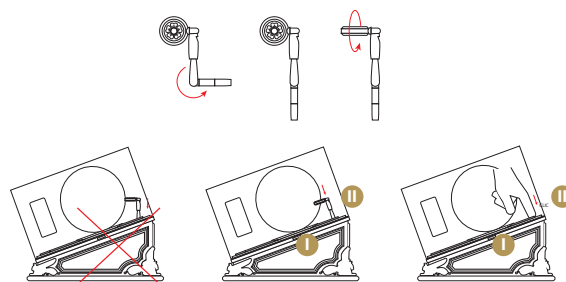
*Reminder: The date must be set to the first of the month to enable the month to be corrected.*

To correct these two displays ⑦ and ⑨ simultaneously, press the (M) (Month) button as many times as necessary until the month and the desired year digit are displayed (4 = leap year, 1 = first year after a leap year, 2 = second year after a leap year, 3 = third year after a leap year). To check the leap-year cycle, visit [www.patek.com](http://www.patek.com).

## DATE CORRECTION

To correct the date ⑥, press the (C) (Calendar) button as many times as necessary until the desired date is displayed.

To store the key in its housing ⑪, first fold the lower part of the tool until it is straight and rotate the head a quarter turn (to the horizontal position). Insert the key into the housing, keeping it at right angles to the plane of the clock, and gently push it in until it is fully inserted.



Close the cover by guiding it gently and without letting it fall back suddenly, while keeping button ① pressed down until the cover is finally closed.



## Recommendations

### WATER RESISTANCE

Your desk clock has seals and fastenings designed to protect the movement from dust and moisture. Nonetheless ensure that no liquids come into contact with your clock.

### MAINTENANCE

We recommend that you have your clock serviced every 8 to 10 years. For this purpose, we suggest you take it to an Authorized Patek Philippe Retailer or Service Center who will send it to our Geneva manufacture, the only location authorized to service the complicated desk clock. You can then be assured that your clock will be inspected and overhauled by a qualified master watchmaker at Patek Philippe headquarters in Geneva. The watchmaker will completely disassemble the movement, clean all its components, check it and lubricate it during reassembly. After testing its correct functioning and adjusting the escapement if necessary, he will keep the clock in order to adjust the rate. The entire service will take several weeks – the time needed to perform all the tests and checks to meet Patek Philippe quality standards.

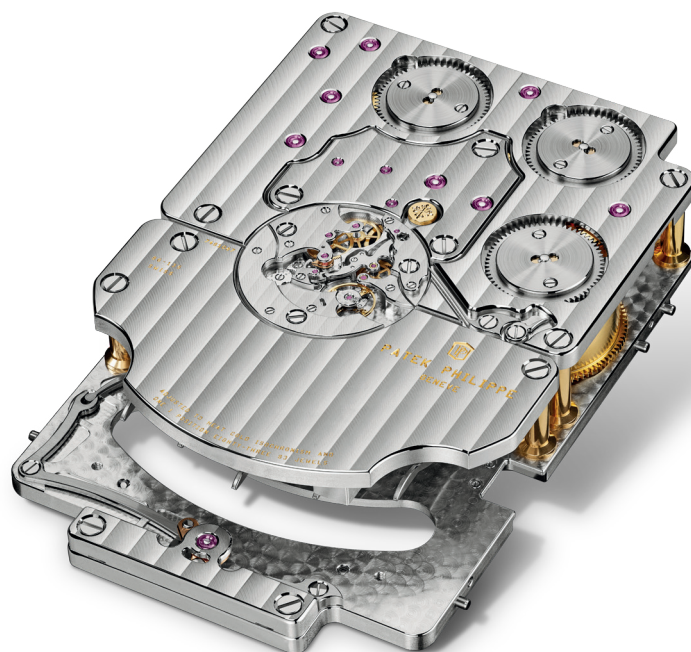
Sterling silver is a precious metal renowned for its unique brilliance. Patek Philippe felt it was important to show the natural hue of silver and how it evolves over time (i.e., not cover it with another material, such as rhodium plating). Like the Packard and Graves clocks before it, your desk clock will develop a patina over time. A cloth is supplied with your clock. You may use it carefully to remove dust or fingerprints. However, if you notice any marks of tarnishing or oxidation, do not attempt to remove them yourself by rubbing

vigorously. Most importantly, make sure you do not use any product available on the market to revive the shine of the silver. You could damage the silver case, the enameled panels or the interior panel with the American walnut veneer. If you have any questions regarding the servicing of your clock, or to obtain the address of the nearest authorized Patek Philippe service center, please contact our International Customer Service in Geneva or visit our website [www.patek.com](http://www.patek.com).

### PATEK PHILIPPE SEAL

A global quality label, the Patek Philippe Seal applies to the entire finished clock, including the movement, case, winding and time setting key, dial, hands, pushers, and all other elements that contribute to the smooth running or external perfection of a timepiece. Covering technical, functional and aesthetic aspects, it highlights not only the fine workmanship involved in crafting the clock, but also its precision and reliability, as well as the quality of the service. It thus incorporates all the expertise and distinctive features associated with the design, production and long-term maintenance of an exceptional timepiece.

## Movement characteristics



|                    |  |
|--------------------|--|
| CALIBER :          | 86-135 PÉNÉTRATION                       |
| DIMENSIONS :       | 135 x 86 MM                              |
| THICKNESS :        | 28.55 MM                                 |
| NUMBER OF PARTS :  | 912                                      |
| NUMBER OF JEWELS : | 83                                       |
| POWER RESERVE :    | 31 DAYS                                  |
| BALANCE :          | GYROMAX®                                 |
| FREQUENCY :        | 28,800 SEMI-OSCILLATIONS PER HOUR (4 HZ) |
| BALANCE SPRING :   | SPIROMAX®                                |
| HALLMARK :         | PATEK PHILIPPE SEAL                      |